

# HOUSEHOLD HAZARDOUS WASTE COLLECTION PROGRAM ANNUAL REPORT 2023/2024



# HOUSEHOLD HAZARDOUS WASTE COLLECTION PROGRAM ANNUAL REPORT 2023/2024

**THE FOLLOWING CENTRAL SAN STAFF CONTRIBUTED  
TO THE PREPARATION OF THIS REPORT**

**Winston Ingram  
David Wyatt**

## **PROGRAM CONTACTS**

**David Wyatt**  
Household Hazardous Waste  
Program Administrator  
(925) 335-7714  
dwyatt@centralsan.org

## **HHW PROGRAM INFORMATION**

(800) 646-1431  
[www.centralsan.org](http://www.centralsan.org)



**FISCAL YEAR 2023-24  
Household Hazardous Waste Collection Program**

**Annual Report**

**Table of Contents**

TABLES AND FIGURES.....	3
INTRODUCTION .....	4
RESIDENTIAL PARTICIPATION .....	5
SAN RAMON DOOR-TO-DOOR COLLECTION PROGRAM.....	10
WASTE VOLUMES .....	12
POLLUTION PREVENTION EFFORTS .....	17
SMALL BUSINESS PROGRAM.....	22
PUBLIC EDUCATION AND OUTREACH .....	23
REVENUE AND EXPENSES.....	24

**Appendices:**

<b>AI</b>	<b>California Integrated Waste Management Board Form 303</b>
<b>AII</b>	<b>Conditionally Exempt Small Quantity Generator Disposal Charges</b>
<b>AIII</b>	<b>HHW Program History – 1997 to Present</b>

**FISCAL YEAR 2023-24**  
**Household Hazardous Waste Collection Program**

**Annual Report**

**TABLES AND FIGURES**

<b>Table</b>	<b>Description/Title</b>	<b>Page No.</b>
RP-1	Residential Participation by Community	8
RP-2	Total participation by Community	9
SR-1	San Ramon Door-to-Door Program	11
WC-1	Estimate of Amount of Waste Collected by Community	16
PP-1	Mercury Collection Summary	17
PP-2	Pollutants of Concern Summary	18
PP-3	Pharmaceutical Collection Summary	19
WD-1	Quantity of Landfill Diverted Waste	21
SB-1	Small Business Participation by Community	22
SB-2	Small Business Appointment Statistics	23
RE-1	FY 2023-24 Summary of Estimated Cost Savings/Rebates	25
RE-2	HHWCF Summary of Revenue and Expenses	29
RE-3	HHW Facility Capital Expenditure Amortization Schedule	31
 <b>Figure</b>		 <b>Page No.</b>
RP-1	HHWCF Participation: Participants per Month	6
RP-2	HHWCF Participation: Average Participants per Day of Week	6
RP-3	HHWCF Participation: Average Participants per Day	7
WC-1	Pounds of Waste per Participant	12
WC-2	Waste Disposal per Month	13
WC-3	Breakdown of Waste Shipped by Weight (%) of Major Categories	14
WC-4	Waste Management Method Breakdown (%) of Waste Processed by Weight	15
RE-1	Cost per Household Broken Down by Expense	26
RE-2	Operating Cost per Household	27
RE-3	Operating Cost Per Pound of Waste Collected	27
RE-4	Participation and Expenses	28

## INTRODUCTION

This summary report of the Household Hazardous Waste (HHW) Program for fiscal year (FY) 2023-24 presents the program participation levels, an analysis of the hazardous waste delivered to the facility, and the costs associated with the program. The program's high level of participation and the amount of hazardous waste collected and properly managed each year demonstrate the benefits to both public health and the environment.

### **Background**

In 1995, it was recognized and resolved by all central Contra Costa County cities<sup>1</sup>, the Central Contra Costa Solid Waste Authority, Central Contra Costa Sanitary District (Central San), and co-sponsor Mt. View Sanitary District (MVSD) that mobile HHW collection events were not efficient or convenient, and that a permanent HHW collection facility (HHWCF) was needed. In 1997, Central San opened the first permanent HHW facility in Contra Costa County with its service agreement partners MVSD and the cities of Clayton, Concord, and San Ramon.

### **Pollution Prevention**

Central San's core function is to operate a municipal wastewater collection system and a 53.8-million-gallons-per-day-rated treatment plant (plant). The wastewater collection system covers 145 square miles and includes approximately 1,500 miles of sewer pipes. In FY 2023-24, the plant treated nearly 12 billion gallons of wastewater.

MVSD's plant serves an estimated population of 21,900, with approximately 270 businesses in its 4.7 square mile service area, which is served by 73 miles of sewer collection system. MVSD reclaims approximately 450 million gallons of water for 21 acres of wetland habitat annually. Both Central San's and MVSD's plants are designed to treat and prevent biological waste from entering our waterways. However, chemicals must be removed prior to entering the plant to keep the biological treatment train healthy. This is how HHW collection benefits Central San and MVSD. Pollution prevention at the source ensures that our plant operates at peak efficiency and eliminates chemical wastes from flowing through treatment processes designed specifically for human waste.

---

<sup>1</sup> Clayton, Concord, Danville, Lafayette, Martinez, Moraga, Orinda, Pleasant Hill, San Ramon, and Walnut Creek

## RESIDENTIAL PARTICIPATION

The HHW Collection Program celebrated the completion of its 26<sup>th</sup> year of service in October 2023. The HHW Program serves all of central Contra Costa County, comprising 200,435 households with a population of approximately 518,835. Program participation for FY 2023-24 was 15.8 percent (32,304 residential customers) across the service area, which is up from 14.9 percent in FY 2022-23. Participation has not returned fully to pre-pandemic levels since peaking at 18.4 percent in FY 2018-19, then falling to 14.0 percent due to the three-month closure in 2020, during the beginning of the pandemic.

Total occupied households within the service area modestly increased by 0.39 percent in FY 2023-24 from 199,653 to 200,435. For perspective, the arithmetic mean of HHW participation (count and percentage of total) and total households in the HHW service area for the previous 10 fiscal years was 32,513 customers, 16.61 percent participation, and 195,484 total households, respectively.<sup>2</sup>

The HHW Collection Facility was open to the public and operational for 295 days during FY 2023-24. Seasonal participation patterns returned to their historical norms, with our highest participation occurring in the summer, then tapering off into fall and winter and steadily increasing from the new year into the spring. The months of June and December were the inflection points of this cycle, again, with 3,059 and 1,639 customers served, respectively. The reuse room was open during all operating days and was used by approximately 15,000 customers. Figure RP-1 shows monthly HHW program participation.

Figure RP-2 presents the average residential participation for each day of operation, Monday through Saturday. Participation throughout the week continued to resemble previous averages, with most customers dropping off waste at the end of the work week.

Throughout this report, FY 2018-19 figures are shown in charts to compare pre-COVID and post-COVID years to help describe where participation, waste volumes, and other performance indicators were prior to the pandemic.

---

<sup>2</sup> A 10-year standard deviation of 2,364 customers, 1.31 percent HHW participation, and 2,960 total households was calculated as well.

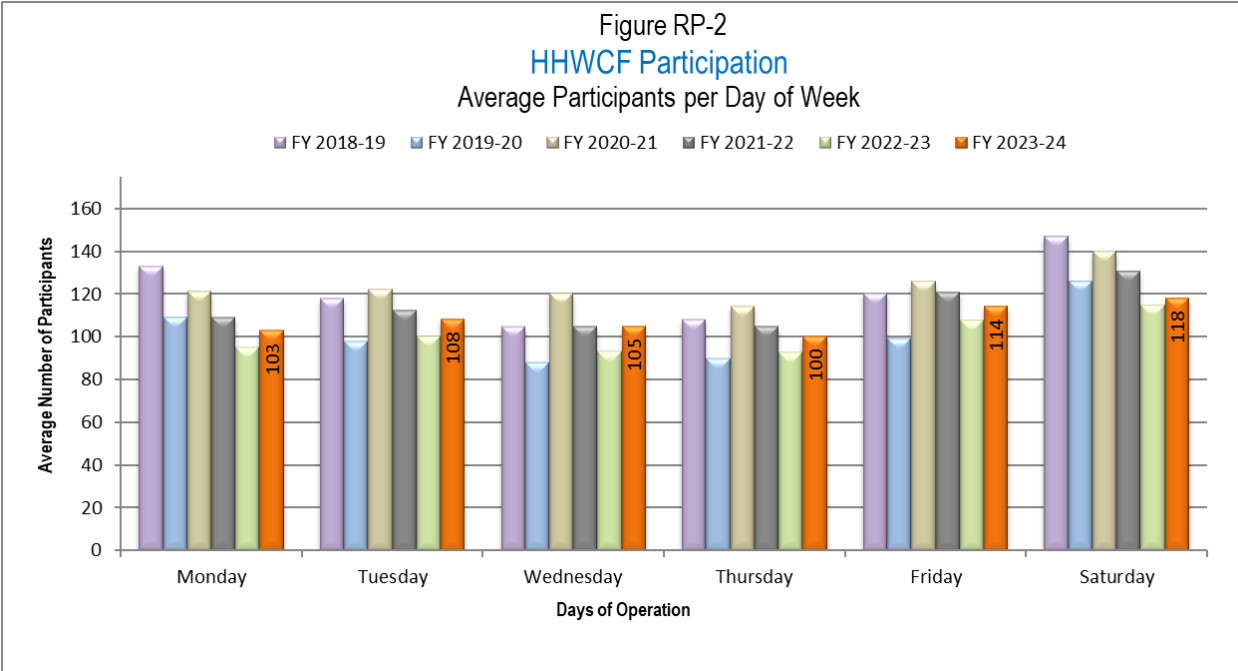
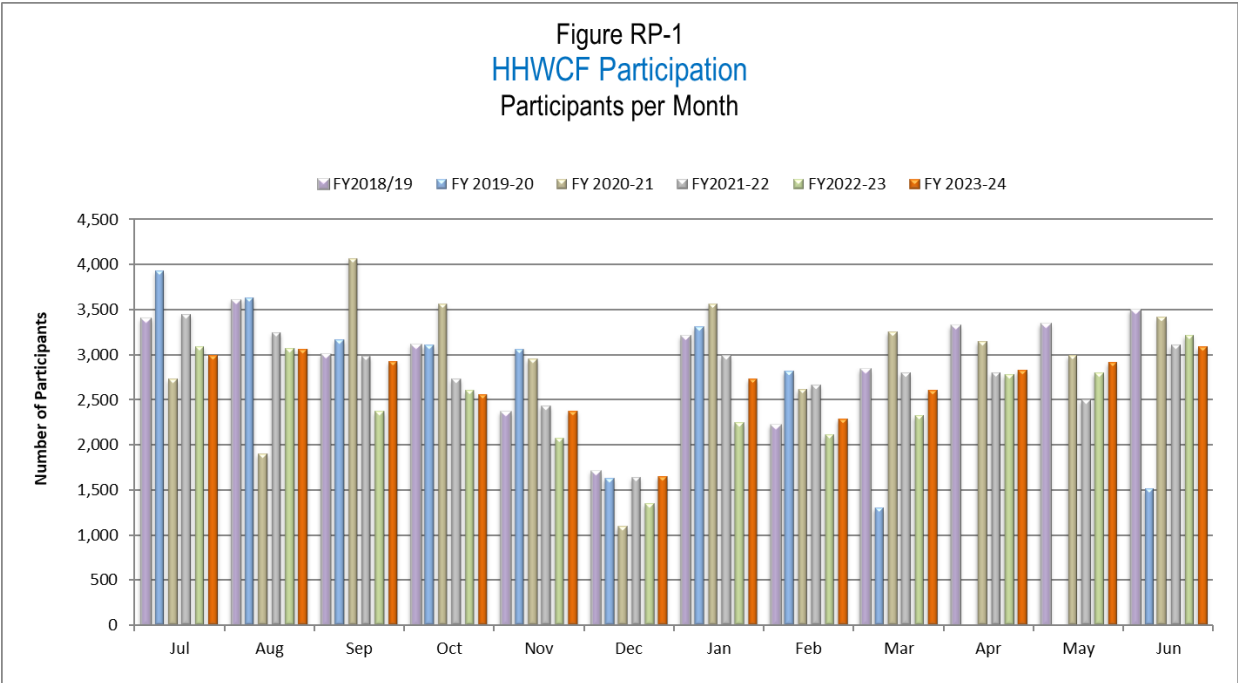


Figure RP-3 presents a comparison of the average number of participants per operating day since the HHW facility opened. This data serves as a tool for planning staffing levels through the different seasons and promoting the facility’s services. FY 2023-24 showed an increase to 109 participants per day from 102 participants per day in FY2022-23, but the previous 10-

year average was 114 participants per day with a standard deviation of seven. Although not large gains, participation is headed back in an upward trend. A straw poll of several local HHW programs also indicates a slight increase in participation over last year.

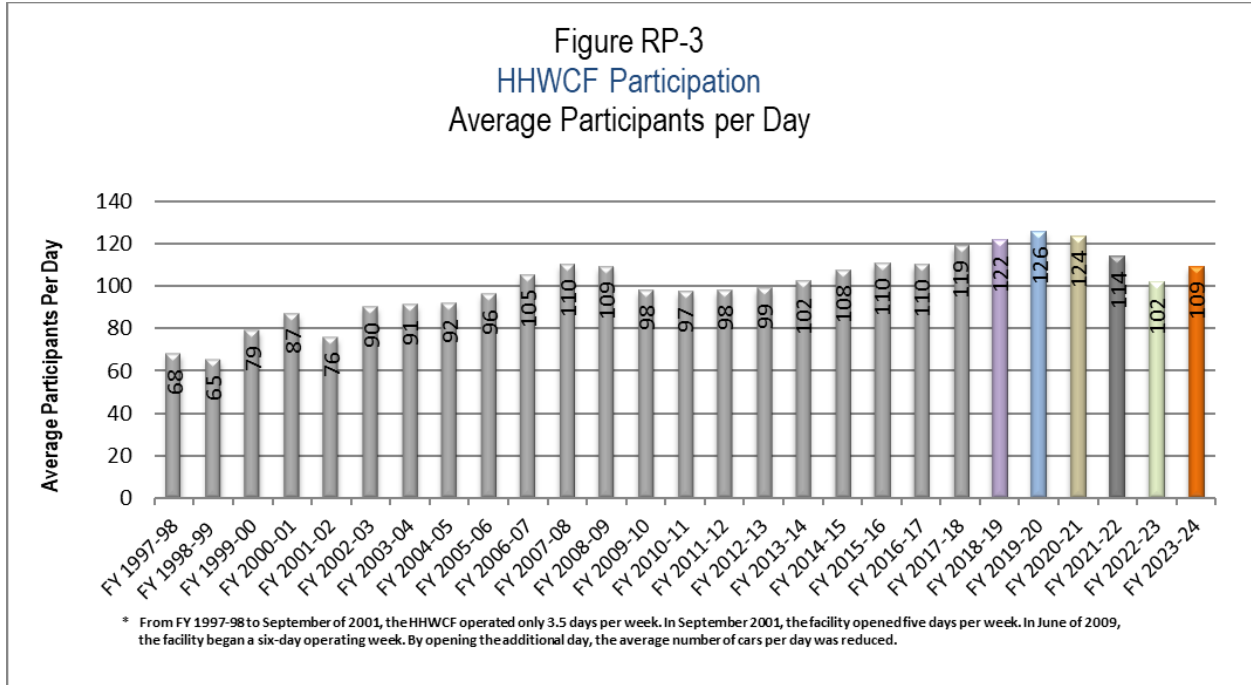




Table RP-1  
**Residential Participation by Community**  
 Fiscal Year 2023-24

<b>Community</b>	<b><sup>1</sup> Number of Households</b>	<b>HHW Facility Participation</b>	<b>% of Community Served</b>	
Clayton	4,117	813	19.7%	
Concord	46,215	6,920	15.0%	
Danville	15,885	2,381	22.6%	
Lafayette	9,672	2,186	22.6%	
Martinez/ MVSD	15,049	5,704	37.9%	
Moraga	5,741	929	16.2%	
Orinda	7,132	1,238	17.4%	
Pleasant Hill	14,019	3,204	22.9%	
San Ramon	28,907	1,175	4.1%	6.5%
<sup>2</sup> San Ramon		699	2.4%	
Walnut Creek	33,109	5,460	16.5%	
Unincorporated	20,589	1,724	8.4%	
Subtotal	200,435	31,734	15.8%	
<sup>3</sup> Out of Service Area	N/A	<sup>4</sup> 320	N/A	
Total	200,435	32,054	N/A	

<sup>1</sup> Central San estimate based on January 2024 California Department of Finance data and data provided by MVSD and the City of San Ramon.

<sup>2</sup> Central San does not sponsor the City of San Ramon's Door-to-Door (DTD) Collection program. Nevertheless, the number of participants served by the program should be included with the number of participants that used the HHW Facility to obtain an overall HHW participation rate. The DTD program includes e-waste pickups.

<sup>3</sup> Hazardous wastes from outside of the service area were accepted and processed for one of two reasons: 1) employees from Central San and MVSD who live outside of the service area are also eligible for HHW program participation, or 2) household hazardous waste generated outside the service area that is deemed unsafe for further transport is accepted and processed as a safe and responsible business practice.

<sup>4</sup> The number of participants outside the service area was not included in the participation percentage.

Table RP-2  
**Percentage of Households in Service Area  
and Participation by Community**  
**Fiscal Year 2023-24**

<b>Community</b>	<b><sup>1</sup> Number of Households</b>	<b>% of Households in Service Area</b>	<b>HHW Facility Participation</b>	<b>% of Total Served</b>
Clayton	4,117	2.1%	813	2.6%
Concord	46,215	23.1%	6,920	21.8%
Danville	15,885	7.9%	2,381	7.5%
Lafayette	9,672	4.8%	2,186	6.9%
Martinez/ MVSD	15,049	7.5%	5,704	18.0%
Moraga	5,741	2.9%	929	2.9%
Orinda	7,132	3.6%	1,238	3.9%
Pleasant Hill	14,019	7.0%	3,204	10.1%
San Ramon	28,907	14.4%	1,175	3.7%
Walnut Creek	33,109	16.5%	5,460	17.2%
Unincorporated <sup>2</sup>	20,589	10.3%	1,724	5.4%
Subtotal	200,435	100%	31,734	100.0%
<sup>3</sup> Out of Service Area	N/A	N/A	320	N/A
Total	200,435	N/A	32,054	N/A

<sup>1</sup> Central San estimate based on January 2024 California Department of Finance data and data provided by MVSD and the City of San Ramon.

<sup>2</sup> Hazardous wastes from outside of the service area were accepted and processed for one of two reasons: 1) Employees from Central San and MVSD who live outside of the service area are also eligible for HHW program participation, or 2) Household hazardous waste generated outside the service area that is deemed unsafe for further transport is accepted and processed as a safe and responsible business practice.

<sup>3</sup> The number of participants outside of the service area was not included in the participation percentage.

## **SAN RAMON DOOR-TO-DOOR COLLECTION PROGRAM**

Since 2011, when the City of San Ramon elected to sponsor their own Door-to-Door (DTD) HHW collection program, we have tracked their usage with the HHW facility to show overall participation and proper waste management within the Central San service area. Table SR-1 below describes the participation, waste volumes, and cost that San Ramon reported, compared to the HHW facility's usage figures for San Ramon. San Ramon reported their DTD program served 699 participants and collected 20,299 pounds of waste (not including electronic waste) at a cost of \$154,416 in FY 2023-24.

San Ramon's decrease in DTD participation follows a two-year trend; however, overall participation in Central San's facility and DTD combined remained the same as last year. See Figure RP-3 (Page 8) and Table SR-1 (page 11).

Table SR-1  
 San Ramon's HHW Facility Participation with  
 San Ramon's Door-to-Door Program

HHW Collection Method	FY 2022-23	FY 2023-24
Central San HHW Facility	1,117	1,175
City of San Ramon Door-to-Door Program	747	699
Total participants	1,864	1,874
Percent difference in participation from previous period	0.54% More	

Pounds of Waste Collected from San Ramon	FY 2022-23	FY 2023-24
Central San HHW Facility	68,255	69,429
City of San Ramon Door-to-Door Program	26,929	20,299
Total pounds	95,184	89,728
Percent difference in pounds of waste collected from previous period	6.10% Less	

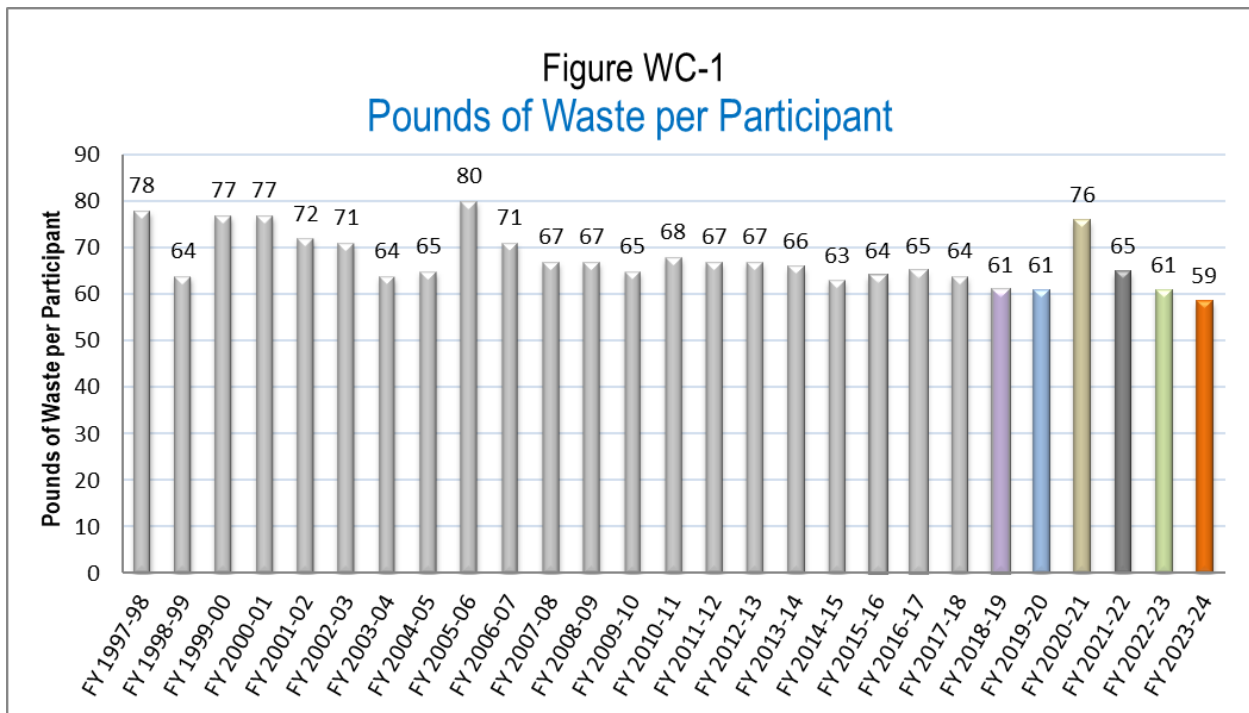
Cost of HHW Collection Method	FY 2022-23	FY 2023-24
Central San HHW Facility *	\$94,473	\$94,486
City of San Ramon's portion of HHW Facility cost	\$22,812	\$27,103
City of San Ramon Door-to-Door Program	\$156,991	\$154,416
<b>Total Cost</b>	<b>\$274,276</b>	<b>\$276,005</b>
HHW Facility Pounds per participant	61	59
HHW Facility Cost per Household Annually	\$16.74	\$16.68
HHW Facility Cost per participant	\$105	\$103
HHW Facility Cost per pound of waste collected	\$1.74	\$1.77
DTD Pounds per participant	36	29
DTD Cost per Household Annually (estimated)	\$5.45	\$5.34
DTD Cost per participant	\$210	\$221
DTD Cost per pound of waste collected	\$5.83	\$7.61

\* Cost is determined by multiplying the Total SR customers serviced at the HHW facility by the cost/participant, then subtracting the amount the City of San Ramon paid for the DSRSD households.

## WASTE VOLUMES

In FY 2023-24, the HHW program collected 1,892,680 pounds of waste from residents and small businesses. Of that total, 1,630,036 pounds of hazardous waste were recycled or disposed of, while 262,644 pounds of reusable products were given to the public in FY 2023-24. Compared to FY 2022-23, reusable products increased by about three percent, while the total waste volumes collected also increased by three percent. However, compared to the mean of the past 10 years of “Pounds of Waste per Participant” figures (63.8 pounds, including the anomalies seen in fiscal years 2020-21 and 2021-22), FY 2023-24 would be 7.5 percent lower than the mean.

As the trend shows in Figure WC-1, the amount of waste per participant is slowly decreasing. It is primarily assumed that because most customers are repeat customers, they are simply generating less waste or using the HHW facility more often.



On average, each customer processed by the HHW program during FY 2023-24 delivered 59 pounds of waste for disposal or reuse. This includes the 32,304 residents, 195 small business appointments, and 55 retail partners that used the HHW collection facility during the fiscal year. This represents a seven percent decrease from the previous fiscal year and approximately one standard deviation from the 10-year average.<sup>3</sup>

<sup>3</sup> A 10-Year mean and Standard Deviation were calculated to be 63.8 and 4.51 pounds respectively.

The wastes were either reused or transported from the HHW collection facility for recycling, fuel blending, incineration, treatment, or landfill. Data specific to waste management activities are presented on pages 14 and 15.

The California Department of Resources Recycling and Recovery (CalRecycle) requires a Form 303 report each fiscal year (July through June) summarizing the quantity and types of hazardous waste processed and a breakdown of the waste management method for each type of hazardous waste collected. This report is included as Appendix I.

Figure WC-2 presents the quantity of wastes transported off-site each month for disposal. FY 2023-24 showed a three percent increase compared to FY 2022-23. Comparison to preceding years yields inconclusive inferences as the Reuse Room was shut down for a majority of FY 2019-20 and FY 2020-21, which led to increased waste disposal for the facility.

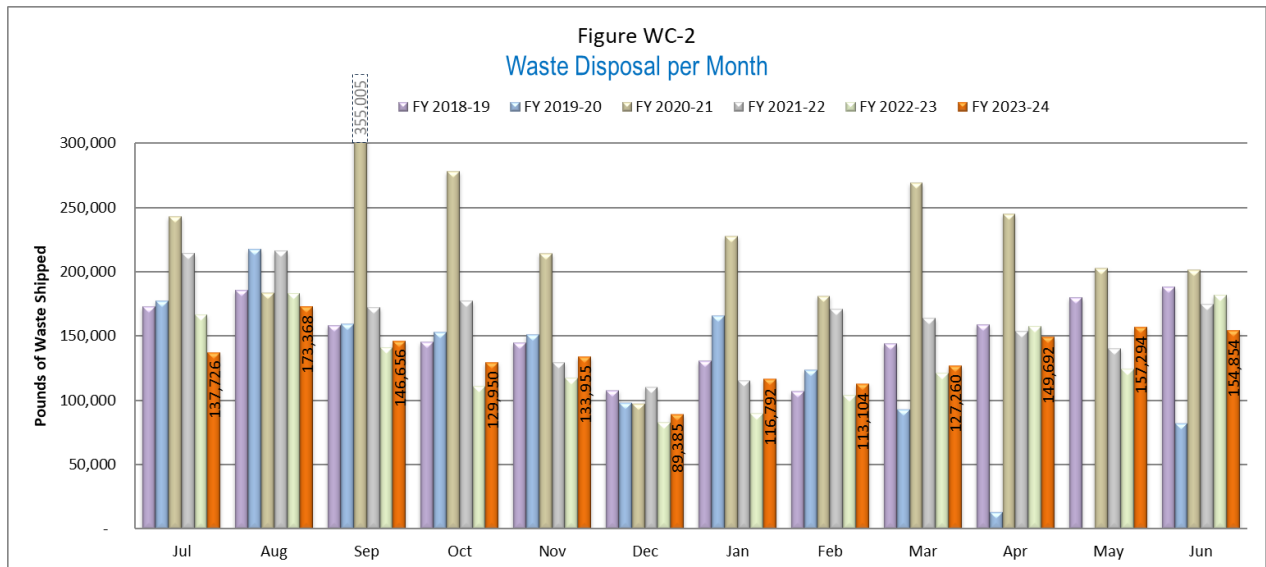


Figure WC-3 presents a breakdown of hazardous wastes processed by type of waste. The transportation classifications on the shipping documents were used as the primary means for segregation into waste types, except for “Automotive Products,” which was used to represent the facility’s motor oil, oil filter, antifreeze, and lead acid battery waste streams. Compared to the previous fiscal year, there were no significant changes to the proportional weight for any specific category. There was only a fluctuation of one percent for flammables, poisons, automotive products, and latex paint. For perspective, the one percent increase in latex paint this year is equivalent to roughly 11 more gallons received per operating day for FY 2023-24.

**Figure WC-3**  
**Breakdown of Waste Shipped**  
**by Weight (%) of Major Categories**  
**Fiscal Year 2023-24**

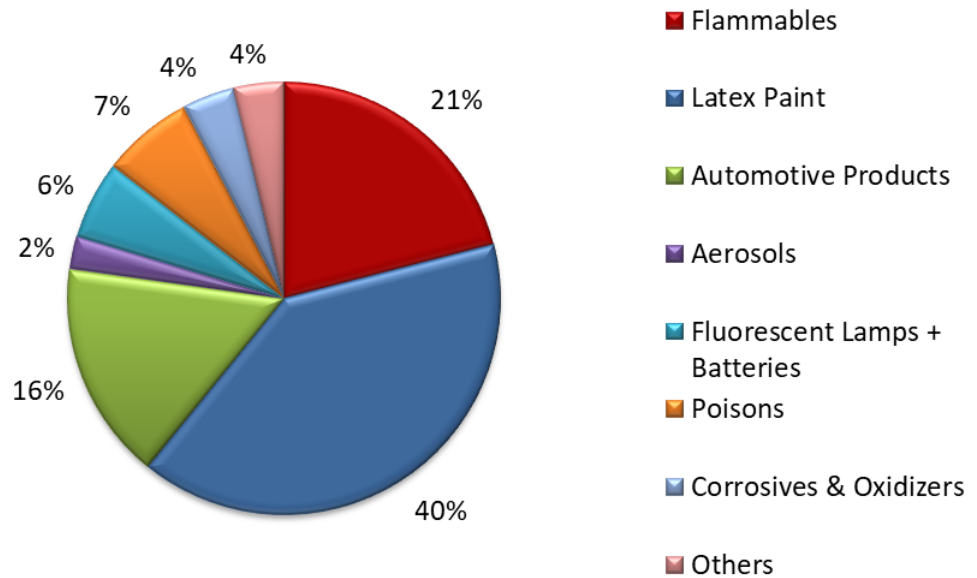


Figure WC-4 presents the distribution of hazardous wastes processed by its management method. Like WC-3, there were no significant changes to treatment method proportions. Nearly 88 percent of the hazardous waste collected was recycled, used for fuel, or offered as reuse. Table WC-1 presents the estimated distribution of HHW collected by community.

**Figure WC-4**  
**Waste Management Method Breakdown**  
**Percentage of Waste Processed by Weight**  
**Fiscal Year 2023-24**

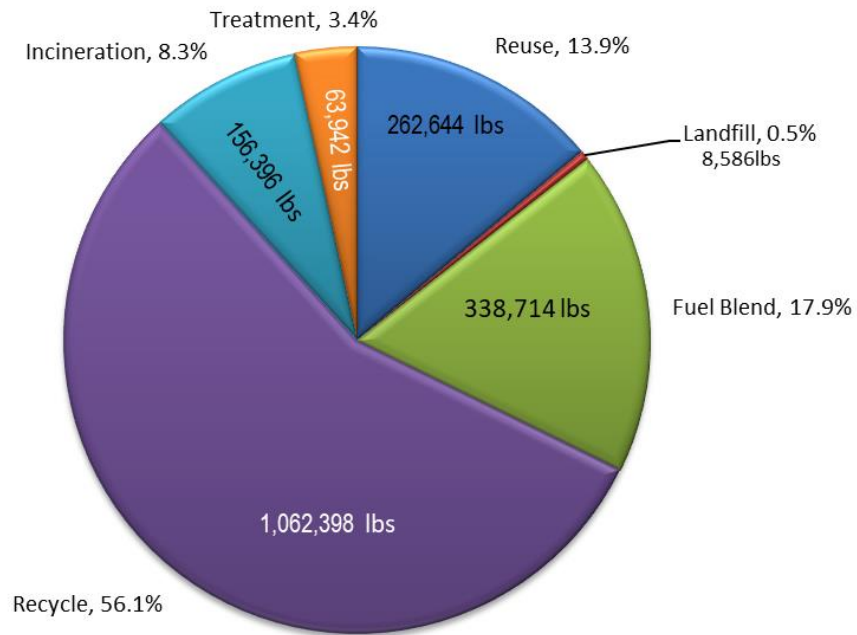




Table WC-1  
 Estimated Amount of Waste Collected by Community

Community	Number of Participants	% of Total Participants (rounded)	Estimated Amount of Waste Collected by Community (pounds)
Clayton	813	2.5%	47,633
Concord	6,989	21.6%	409,483
Danville	2,387	7.4%	139,853
Lafayette	2,203	6.8%	129,073
Martinez / Mt. View	5,770	17.9%	338,062
Moraga	938	2.9%	54,957
Orinda	1,245	3.9%	72,944
Pleasant Hill	3,214	9.9%	188,307
San Ramon	1,185	3.7%	69,429
Walnut Creek	5,505	17.0%	322,536
Unincorporated	1,735	5.4%	101,653
<b>Subtotal</b>	31,984	99.0%	1,873,931
Out of Service Area	320	1.0%	18,749
<b>Total</b>	32,304	100.0%	1,892,680

<sup>1</sup> The total number of participants includes 30,327 participants from the permanent facility, 55 Retail partnership drop-offs, and 195 business appointments.

<sup>2</sup> The total weight collected includes disposed and reused from the permanent facility (residents, businesses, and retail).

## POLLUTION PREVENTION EFFORTS

Central San’s Pollution Prevention (P2) program has evolved over the years to become an important component of our mission, which specifically includes P2 and reflects the growing importance of P2 for regulatory compliance. Central San is required to monitor and prevent certain pollutants from entering the influent wastewater. The HHW program helps prevent waste from reaching the sewer and tracks the amount diverted from the system.

### Mercury Collection Program

The HHW program facilitates Central San’s promotion of proper mercury disposal by accepting all types of mercury, including elemental mercury, mercury-containing devices (e.g., fluorescent bulbs, batteries, mercury switches, and mercury thermometers), and mercury-containing compounds (paints and pesticides containing mercury).

Since the beginning of the mercury thermometer exchange program in 1999, more than 7,700 mercury thermometers have been collected and exchanged for non-mercury types. Table PP-1 describes the types of mercury-containing wastes tracked by HHW staff. This system closely estimates the quantities of mercury contained in fluorescent lamps, thermometers, thermostats, switches, button-cell batteries, and elemental mercury. In FY 2023-24, the HHW program collected nearly 32 pounds of elemental mercury contained in these types of wastes.

Table PP-1  
**FY 2023-24 Mercury Collection Summary**

<b>Mercury-Containing Devices</b>	<b>Number of Items</b>	<b>Units</b>	<b>Estimated Quantity of Mercury</b>	<b>Total Pounds Hg</b>
Thermostats (3 Grams/unit)	54	Ea.	162 Grams	0.36
Thermometers (1 Grams/unit)	494	Ea.	494 Grams	1.09
Elemental Hg (Lbs.)	N/A	N/A	N/A	26.00
Switches	2	Lbs.		0.93
Mercury Batteries	229	Lbs.	715,625 Milligrams	1.60
Fluorescent Lamps	404,000	Feet	538.27 Milligrams	1.80
Total mercury (Hg) in Pounds				31.78
Paints, pesticides, and other compounds containing mercury	1	Container	Unknown	8.5

## Other Pollutants

Additional pollutants of concern, such as legacy pesticides, are tracked separately to provide a more accurate report of collected compounds. Table PP-2 shows which pollutants of concern are tracked and the quantity collected in FY 2023-24.

Table PP-2  
FY 2023-24 Pollutants of Concern Summary

Compound	Total Pounds
Tributyltin	99
Diazinon	3,676
Chlorpyrifos	3,130
Carbaryl	4,176
Copper	4,015
Pentachlorophenol / 2,4,5-T / Trichlorophenol	106
Lindane	23
Chlordane	254
DDT (DDE)	84
Dieldrin	1
Lead Compounds	242
Pyrethroids (pesticides)	18,775
Ammonia	3,424
Fats, Oils and Greases (FOG)	33,154
Polychlorinated biphenyls (PCBs) / Light ballasts	704
Total	71,863

## Pharmaceutical Collection Program

Another way the HHW Program contributes to Central San's P2 program is by collecting unwanted or expired pharmaceuticals from residents. Pharmaceuticals can threaten our bays, rivers, and creeks as some of the compounds they contain cannot be entirely treated or removed by wastewater treatment plants. Pharmaceuticals can enter the sewer system by excretion from the body or customers dumping them down the drain. Since we cannot prevent unmetabolized medications from entering the treatment plant, we established a collection and disposal program for unwanted pharmaceuticals.

Table PP-3 describes the amount of pharmaceuticals collected by each site and the cost of collection and disposal during the year.

Table PP-3  
 FY 2023-24 Pharmaceutical Collection Summary

<b>Collection Sites</b>	<b>Total Bins (18-Gallon)</b>	<b>Total Pounds</b>	<b>Average Lbs./Bin</b>	<b>Total Cost</b>	<b>*Average Cost/Lb.</b>
Alamo	6	141	23.5	\$750	\$5.32
Sherriff FOB	11	420	38.2	\$1,375	\$3.27
CCC Hospital	2	79	39.5	\$250	\$3.16
Walnut Creek	34	1,289	37.9	\$4,250	\$3.30
<b>Total</b>	<b>53</b>	<b>1,929</b>	<b>36.4</b>	<b>\$6,625</b>	<b>\$3.43</b>

\*The variation in the average cost per pound is caused by the amount of packaging (jars, paper, cardboard, etc.) included in the collection bins. Bags for consolidating pills are offered at most collection sites but are not often used. The fullness of the container when it is picked up also affects the cost/lb.

Since the pharmaceutical program began in 2009, nearly 168,000 pounds of unwanted or expired medications have been collected and properly disposed of by incineration. In FY 2023-24, approximately 1,929 pounds were collected at the cost of \$6,250. There has been a consistent decline in the quantity of medications collected by our pharmaceutical program primarily because of the increased number of collection locations in the HHW service area associated with Med-Project, the state-required, manufacturer-sponsored pharmaceutical collection program. There are more than 44 Med-Project collection sites, including the four remaining Central San sites in the HHW service area.

\* The following sites were converted to Med-Project as of the listed dates:

- |                               |                          |
|-------------------------------|--------------------------|
| San Ramon - November 2019     | Moraga - April 2022      |
| Clayton - June 2021           | Lafayette – January 2023 |
| Concord - June 2021           | Danville - March 2023    |
| Orinda – July 2021            | Martinez - July 2023     |
| Pleasant Hill - December 2021 |                          |

## WASTES DIVERTED FROM SEWER AND LANDFILL DISPOSAL

The California Integrated Waste Management Act of 1989 (AB 939) requires the diversion of HHW from the municipal solid waste stream. AB 939 establishes a waste management hierarchy to minimize the amount of HHW sent to landfills through reduction, reuse, recycling, treatment, or incineration (fuel blending or destructive incineration). It diverts a minimum of 50 percent of solid waste from being landfilled. The emphasis is on reduction, reuse, and recycling whenever possible.

Although Central San's HHW program is not required to comply with AB 939, Central San's waste management strategy mirrors AB 939 by prioritizing reduction, reuse, recycling, and fuel blending, in that order, to the greatest extent feasible. All of these management methods divert wastes from being landfilled. The HHW program's progress toward sewer and landfill diversion for FY 2023-24 is outlined below.

### **Reused**

The reuse room was open each operating day in FY 2023-24. During this time, 13.9 percent (262,644 lbs.) of the waste received was diverted to the reuse program and returned to the public because it was still a viable/usable product. As a result, the reuse program saved approximately \$121,000 in disposal costs.

### **Recycled**

The waste recycled at off-site facilities includes latex paint, used motor oil/filters, antifreeze, car batteries, propane cylinders, fluorescent lamps, LED lamps, lead (scrap metal), mercury, household batteries, printer cartridges, Freon, mercury thermostats, fire extinguishers, and even home-generated cooking oil. Many of these recyclable waste streams are free, or we receive rebates for recycling.

### **Fuel Blended (Waste Derived Fuel)**

In FY 2023-24, 338,714 pounds of oil-based paint and fuels (gasoline, paint thinners, etc.) were blended with other flammable hazardous wastes and used as a fuel source to make Portland cement. While fuel blending is lower in the waste management hierarchy than recycling, it is still a beneficial use that avoids using fossil fuels and prevents destructive incineration, treatment, or Class I landfill disposal. Table WD-1 shows the waste streams and quantities of waste diverted from landfills.

Table WD-1  
Quantity of Landfill Diverted Waste

Material Type	Quantity Recycled (Lbs.)
Motor Oil and Oil Filters	177,274
Antifreeze	34,216
Car Batteries	54,677
Fluorescent and LED lights	35,917
Compressed Gas Cylinders (Propane and Fire Extinguishers)	24,120
Scrap Metal (Lead, Brass, and Copper)	95
Printer Cartridges	1,339
Mercury and Mercury Products	186
Household batteries	59,861
Latex Paint	649,782
Cooking Oil	24,858
Smoke Detectors	73
<b>Total recycled waste</b>	<b>1,062,398</b>
Reused HHW	262,644
<b>Total recycled and reused</b>	<b>1,325,042</b>
<b>Percent of HHW reused or recycled</b>	<b>70.0%</b>
<b>Fuel Blended</b>	
Oil-Based Paint	211,364
Other Flammable Liquids	127,350
<b>Total fuel blended waste</b>	<b>338,714</b>
<b>Percent of waste fuel blended to total collected</b>	<b>17.9%</b>
<b>Total landfill-diverted waste</b>	<b>1,663,756</b>
<b>Percent of waste diverted from landfill</b>	<b>87.9%</b>
<b>Total waste collected, including reused, recycled, and disposed</b>	<b>1,892,680</b>

## SMALL BUSINESS PROGRAM

An essential component of the HHW program is the collection of hazardous wastes from small businesses. These businesses must meet the regulatory standards as a “Very Small Quantity Generator” (VSQG). This Small Business Program remains a cost-effective and convenient disposal option for small hazardous waste generators. Program statistics are in tables SB-1 and SB-2.

Revenue collected from small businesses is for hazardous waste disposal or recycling only and includes an administration fee of \$20 per appointment. Small business participation fluctuates from year to year, as does the revenue collected. See Appendix III for the current Small Business Program disposal rates.

Small Business Program outreach includes ongoing advertising in local chamber of commerce publications, Central San’s *Pipeline* newsletter, MVSD’s *Mt. View Monitor* newsletter, and business trade fairs. Central San’s Environmental Compliance Inspectors and Contra Costa County Hazmat Program Inspectors also share the opportunity while completing their fieldwork and onsite audits of the operations of eligible businesses.

**Table SB-1**  
**Small Business Participation by Community**

Community	Fiscal Year 2023-24	Previous Year
Clayton	0	0
Concord	69	71
Danville	6	1
Lafayette	17	11
Martinez/ Mt. View	33	38
Moraga	9	3
Orinda	6	4
Pleasant Hill	10	17
San Ramon	10	9
Walnut Creek	27	26
Unincorporated	8	11
Outside of service area	0	0
<b>TOTAL</b>	<b>195</b>	<b>191</b>

Table SB-2  
Small Business Appointment Statistics

Fiscal Year	Number of Businesses Served	Number of <u>New</u> Businesses Served	Number of Appointments	Estimated Pounds of Waste Collected	Revenue per Pound of Waste	Revenue Collected
05-06	128	55	252	40,841	\$0.54	\$22,054
06-07	161	94	373	81,777	\$0.45	\$37,008
07-08	191	104	386	59,966	\$0.57	\$34,324
08-09	148	75	416	72,728	\$0.46	\$33,236
09-10	178	82	439	73,045	\$0.43	\$29,290
10-11	206	77	485	72,991	\$0.43	\$31,157
11-12	171	68	378	53,486	\$0.54	\$30,696
12-13	134	53	291	42,838	\$0.58	\$24,707
13-14	129	40	255	35,620	\$0.64	\$22,900
14-15	141	48	287	42,876	\$0.63	\$27,126
15-16	149	67	339	55,370	\$0.61	\$33,884
16-17	158	51	303	44,436	\$0.63	\$28,054
17-18	149	63	353	55,287	\$0.64	\$35,566
18-19	181	62	348	57,898	\$0.68	\$39,126
19-20	130	55	247	38,698	\$0.71	\$27,234
20-21	87	19	201	33,920	\$0.76	\$25,862
21-22	93	22	209	38,914	\$0.76	\$29,733
22-23	74	24	191	34,227	\$0.71	\$24,442
<b>23-24</b>	<b>127</b>	<b>26</b>	<b>195</b>	<b>33,057</b>	<b>\$0.72</b>	<b>\$23,823</b>

## PUBLIC EDUCATION AND OUTREACH

HHW program participation has grown steadily since the first year of operation. It is publicized in each Central San Pipeline newsletter issue, mailed twice yearly, to more than 156,000 Central San residential and business customers. Additionally, MVSD, the Central Contra Costa Solid Waste Authority, and cities and organizations in the service area have used social media and newsletters to provide public education and promotion of the HHW program and its associated Pharmaceutical Disposal Program. With this promotional strategy, about 3.3 percent of the total residential participants during FY 2023-24 were first-time customers, and the remaining 96.7 percent were repeat customers.



## REVENUE AND EXPENSES

The HHW program expenses for FY 2023-24 were \$3,342,731, or 4.6 percent more than last year. The increase is primarily due to labor costs (District and contract) increasing by 10.8 percent and our waste services contract, which increased the incremental costs for waste disposal, contract labor, and related supplies by more than 30 percent. Contract labor costs rose considerably when prevailing wages were found to be required for non-“trade” positions performing work for most water-related special districts.

Waste disposal costs have remained high since August 2021, when US EPA issued a notice explaining a nationwide backlog and warned the hazardous waste disposal market was under stress and was not expected to recover until the summer of 2022. US EPA extended that warning in May 2022 and again in July 2023, saying the backlog remains in effect. Although it appears the backlog has been reduced enough to return costs to levels before August 2021, they have not. It appears that the current elevated costs are now the new standard.

Beginning in FY 2022-23, we are focusing on the cost per household rather than the cost per participant, as the cost per household represents what Central San customers pay as part of their sewer service charge. For the first 24 years of operation, we reported the cost per participant as the gauge to value our customers’ expenses, but it only represents what it would cost if each HHW customer had to pay at the time of service. It is unreasonable to continue to report a cost of \$80-100 per participant that is not charged to our customers and a cost our customers would not likely pay to use the service if required. It will remain in the report for historical purposes only.

For FY 2023-24, the cost per household was \$16.68. This means that \$16.68 of each annual sewer service charge allowed residents unlimited access to the HHW facility, Reuse Room, Pharmaceutical Collection Program, and the Residential Recycled Water Fill Station. All were open and available seven hours a day, six days per week, and for 296 days. This cost per household is slightly more than last year’s \$16.00 per household due to the cost increases mentioned previously. Although not included in the cost of the HHW program, the Residential Recycled Water Fill Station is conveniently positioned at the HHW facility, and its operation and staff are overseen by HHW staff.

### **Revenue, Savings, and No Cost Waste Management**

Revenue for the HHW Collection Facility included payments from other jurisdictions under service agreements (MVSD, City of Concord, City of Clayton, and City of San Ramon) and charges to

small businesses under the Small Business Program. Also, staff is diligent in seeking low-cost or no-cost management or revenue-generating alternatives while keeping safe and proper disposal in mind. Many of the wastes collected by the HHW facility have market value or require manufacturers to manage and pay the cost of their recycling, also known as Extended Producer Responsibility (EPR). Table RE-1 describes the revenue-generating or no-cost waste streams that were collected in FY 2023-24 and the savings or rebates provided to Central San.

Table RE-1

**Household Hazardous Waste Collection Facility**  
**FY 2023-24 Summary of Estimated Cost Savings/Rebates**

<b>Waste Stream</b>	<b>FY 2023-24 Pounds Collected</b>	<b>Savings or Rebates Provided by EPR or Other</b>
PaintCare Latex and Oil-Based Paint Waste	731,246	* \$285,186
Reusable PaintCare Latex and Oil-Based Products (Rebate)	115,504	* \$18,481
Savings from PaintCare Reusable Products Given Away Rather than Disposed	115,504 (Not included in total below.)	* \$45,047
<b>Estimated Savings Related to PaintCare Disposal</b>	<b>846,750</b>	<b>\$348,714</b>
Non-PaintCare Reusable Products	147,140	* \$57,385
Small Business Program Revenue	24,442	\$23,823
Sale of Collected Materials or No-Cost Recycling	88,745	** \$48,179
<b>Estimated Other Savings</b>	<b>260,327</b>	<b>\$129,387</b>
<b>Estimated Total Annual Savings</b>	<b>1,107,077 pounds</b>	<b>\$478,101</b>

\* Cost savings related to PaintCare and reusable products (reuse) is based on the total disposal and material costs divided by the number of pounds disposed (\$0.39/lb. for '23-24), multiplied by the number of pounds of PaintCare waste recycled and other reusable products. This is a conservative estimate and does not include labor or other factors.

\*\* Sale of collected materials or no-cost recycling – Savings/rebate equals “Sale of collected materials and small business revenue” minus PaintCare reuse rebate and Small Business Program revenue. Pounds collected is total of car batteries, cooking oil, rechargeable batteries, Li-ion batteries, printer cartridges, lead, mercury thermostats, and freon. The savings shown includes the cost to dispose (at \$0.39/lb.) and any rebates provided.

## Tables and Figures

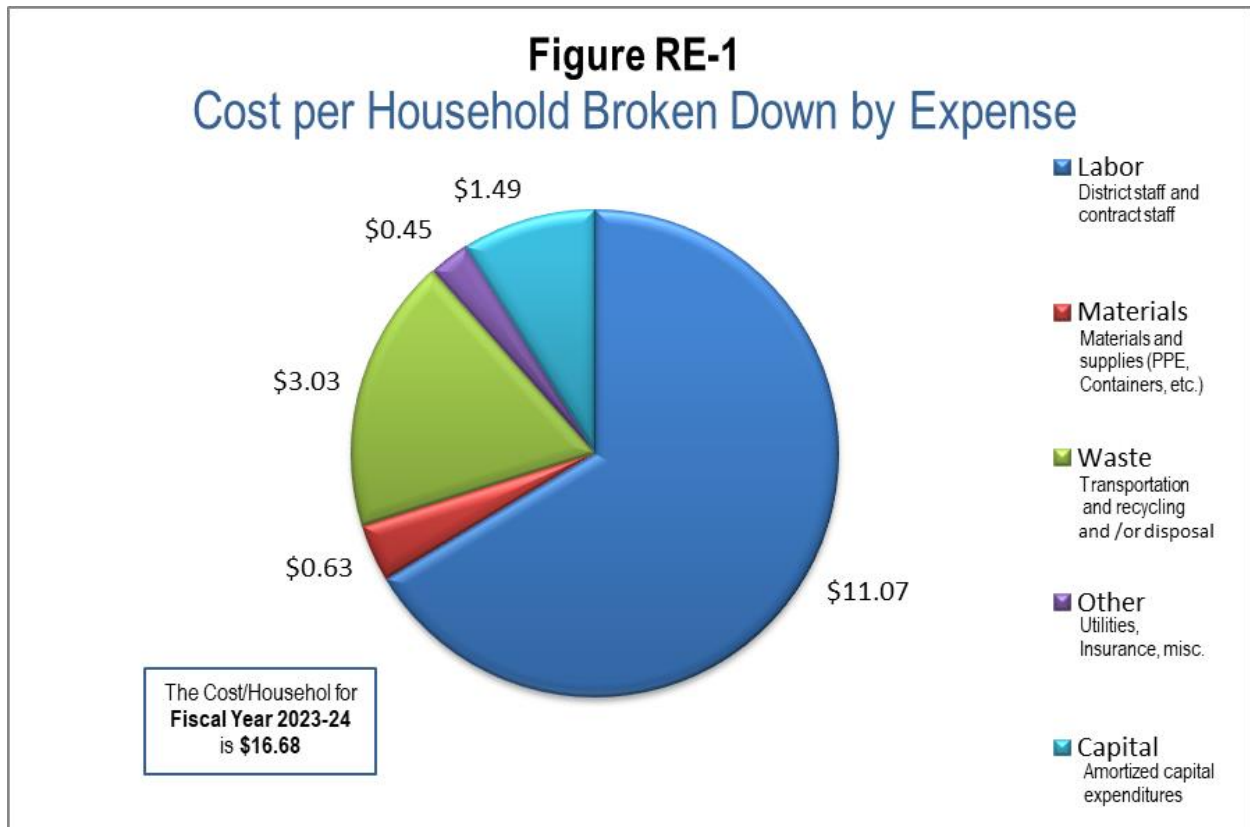
Figure RE-1 Shows the operating cost per household in the HHW service area broken down by expense category.

Figure RE-2 lists the cost per household for each year the HHW program has been in operation.

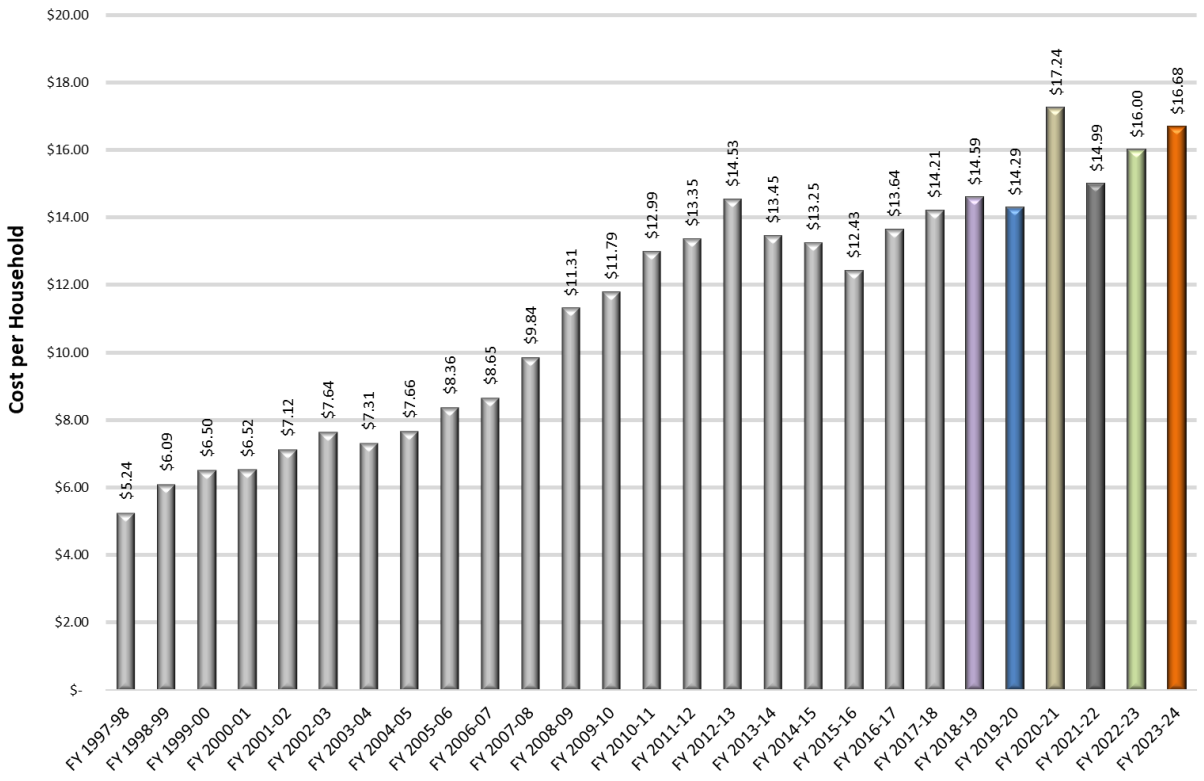
Figure RE-3 shows the current and historical operating cost per pound of waste collected.

Figure RE-4 shows the historical cost per participant.

Table RE-1 presents a full summary of revenue and expenses for the HHW Program for FY 2023-24.



**Figure RE-2**  
**HHW Program Annual Cost per Household 1997-Present**



**Figure RE-3**  
**Operating Cost per Pound of Waste Collected**

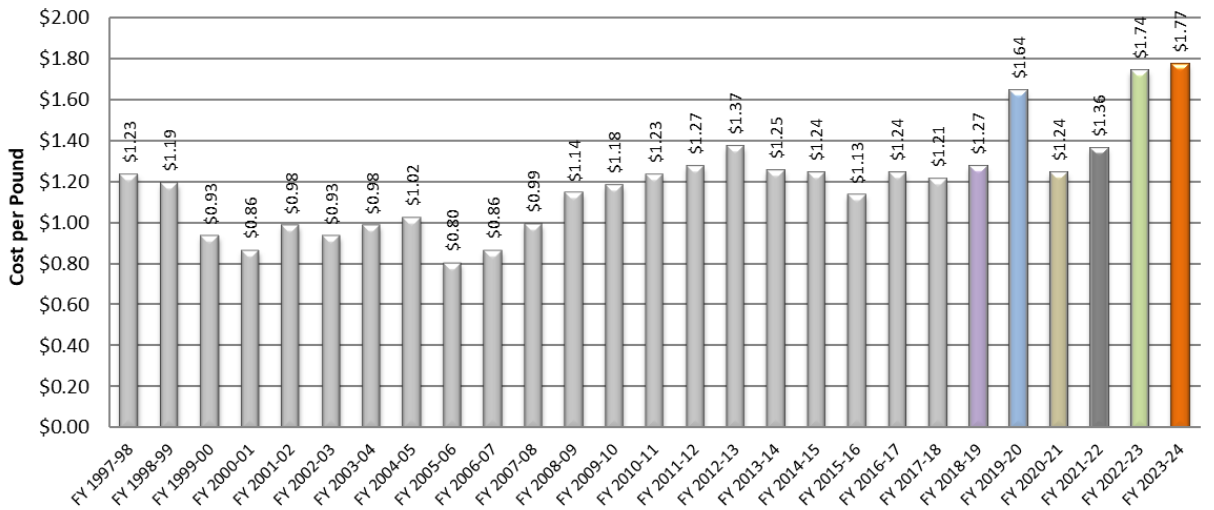


Figure RE-4  
Operating Cost per Participant

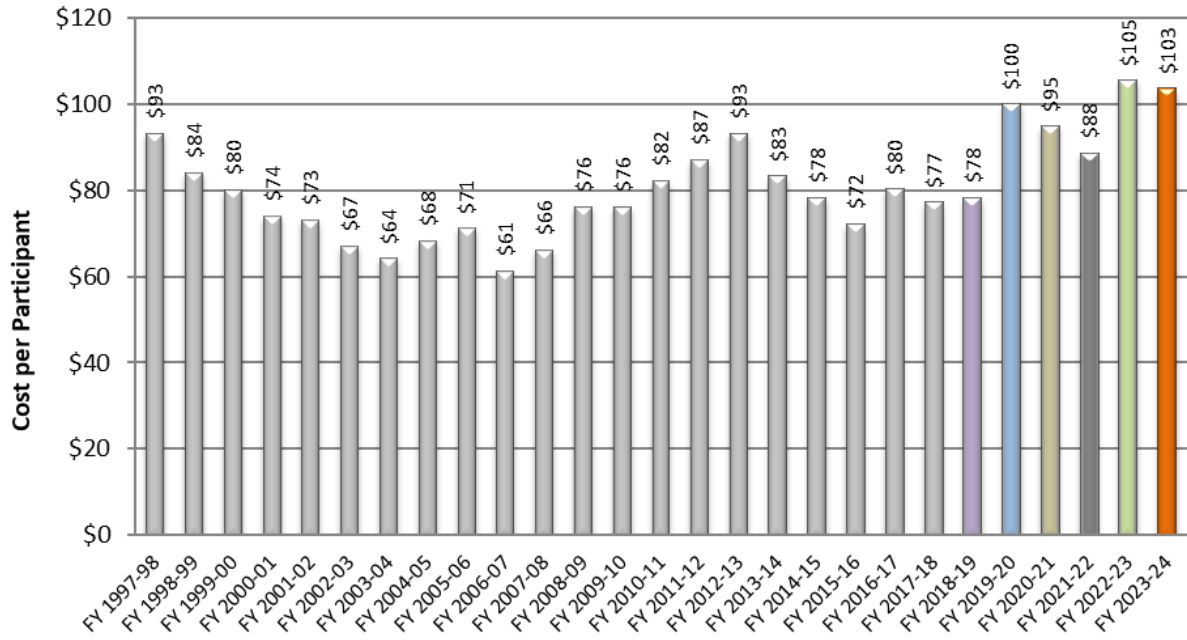


Table RE-2

**Household Hazardous Waste Collection Facility**  
Fiscal Year 2023-24 Summary of Revenue and Expenses

<b>REVENUE</b>	<u>FY 2022-23</u>	<u>FY 2023-24</u>
Central San Sewer Service Charges:	\$ 2,141,866	\$ 2,228,850
Service Agreements with other jurisdictions:	<u>FY 2022-23</u>	<u>FY 2023-24</u>
Mt. View Sanitary District	\$ 140,288	\$ 141,473
City of Concord	745,355	778,264
City of Clayton	66,004	69,331
City of San Ramon	<u>22,812</u>	<u>27,103</u>
	\$ 974,459	\$ 1,016,171
Sale of collected materials and small business charges:	\$ 54,780	\$ 83,516
Transfer portion of revenue to Self-Insurance for Insurance Policy:	<u>\$ 23,878</u>	<u>\$ 14,194</u>
<b>TOTAL REVENUE</b>	<b><u>\$ 3,194,983</u></b>	<b><u>\$ 3,342,731</u></b>
<b>Expenses</b>	<u>FY 2022-23</u>	<u>FY 2023-24</u>
Salaries, benefits, and overhead (HHW Staff)	\$ 1,788,900	\$ 2,027,065
Environmental liability premiums	78,986	47,205
Utilities	18,724	18,329
Repairs and maintenance	7,242	5,851
Transportation and disposal	654,273	607,175
Professional, technical, and legal services	214,027	192,453
Materials and supplies	123,278	126,863
Other expenses	<u>11,512</u>	<u>19,750</u>
<b>TOTAL OPERATING EXPENSES</b>	<b><u>\$ 2,896,942</u></b>	<b><u>\$ 3,044,690</u></b>
Amortization of Capital Expenditures	<u>298,041</u>	<u>298,041</u>
<b>TOTAL EXPENSES</b>	<b><u>\$ 3,194,983</u></b>	<b><u>\$ 3,342,731</u></b>

**Amortization of Capital Expenditures**

Amortization of capital expenditures is derived from the capital costs of building the collection facility and all capital improvements amortized over 30 years. No capital expenditures were added to the facility in FY 2023-24. Table RE-2 shows the amortization schedule of all capital expenditures since the completion of the HHW facility in 1997.

Table RE-3

**HHW Facility Capital Expenditure Amortization Schedule**

Years	Fiscal Year Ending	Original Construction	Improvement Projects - District Project (DP)					Total
			DP 8180	DP 8197 & 8204	DP 8209 & 7229	DP 8216	DP 7256	
		\$ 1,900,000	\$ 427,368	\$ 32,492	\$ 319,393	\$ 1,422,353	\$ 3,085	\$ 4,104,691
1	1998	\$ 138,035						138,035
2	1999	138,035						138,035
3	2000	138,035						138,035
4	2001	138,035						138,035
5	2002	138,035						138,035
6	2003	138,035						138,035
7	2004	138,035	\$ 31,048					169,083
8	2005	138,035	31,048	\$ 2,361				171,444
9	2006	138,035	31,048	2,361				171,444
10	2007	138,035	31,048	2,361	\$ 23,204			194,648
11	2008	138,035	31,048	2,361	23,039			194,483
12	2009	138,035	31,048	2,361	23,039			194,483
13	2010	138,035	31,048	2,361	23,039			194,483
14	2011	138,035	31,048	2,361	23,039	\$ 103,334		297,817
15	2012	138,035	31,048	2,361	23,039	103,334		297,817
16	2013	138,035	31,048	2,361	23,039	103,334	\$ 224	298,042
17	2014	138,035	31,048	2,361	23,039	103,334	224	298,041
18	2015	138,035	31,048	2,361	23,039	103,334	224	298,041
19	2016	138,035	31,048	2,361	23,039	103,334	224	298,041
20	2017	138,035	31,048	2,361	23,039	103,334	224	298,041
21	2018	138,035	31,048	2,361	23,039	103,334	224	298,041
22	2019	138,035	31,048	2,361	23,039	103,334	224	298,041
23	2020	138,035	31,048	2,361	23,039	103,334	224	298,041
24	2021	138,035	31,048	2,361	23,039	103,334	224	298,041
25	2022	138,035	31,048	2,361	23,039	103,334	224	298,041
26	2023	138,035	31,048	2,361	23,039	103,334	224	298,041
27	2024	138,035	31,048	2,361	23,039	103,334	224	298,041
28	2025	138,035	31,048	2,361	23,039	103,334	224	298,041
29	2026	138,035	31,048	2,361	23,039	103,334	224	298,041
30	2027	138,035	31,048	2,361	23,039	103,334	224	298,041
	2028		31,048	2,361	23,039	103,334	224	160,006
	2029		31,048	2,361	23,039	103,334	224	160,006
	2030		31,048	2,361	23,039	103,334	224	160,006
	2031		31,048	2,361	23,039	103,334	224	160,006
	2032		31,048	2,361	23,039	103,334	224	160,006
	2033		31,048	2,361	23,039	103,334	224	160,006
	2034			2,361	23,039	103,334	224	128,958
	2035				23,039	103,334	224	126,597
	2036				23,039	103,334	224	126,597
	2037					103,334	224	103,558
	2038					103,334	224	103,558
	2039					103,334	224	103,558
	2040					103,334	224	103,558
	2041						224	224
	2042						224	224
		\$ 4,141,050	\$ 931,449	\$ 70,830	\$ 691,341	\$ 3,100,020	\$ 6,272	\$ 8,940,961

Rate = 6 percent amortized over 30 years.



# APPENDIX I

## F303 FORM





**Form CalRecycle 303 Household Hazardous Waste Collection Information For 2023-2024**

**Name of Public Agency Reporting:** Central Contra Costa Sanitary District  
**HHW Program Manager:** David Wyatt ,HHW Program Supervisor  
**Address:** Regulatory and Environmental Compliance Division 5019 Imhoff Place Martinez, CA 94553  
**Phone Number:** (925) 335-7714  
**Fax Number:** (925) 370-8647  
**Email:** dwyatt@centralsan.org  
**Contractor's Name:** ACTenviro  
**Participating Households:** 32,304 **Method:** Number of Vehicles  
 Participating Households includes non-residential (CESQG,schools,nonprofits,etc.): Yes  
**Service Area Households:** 200,435 Different than Finance E-5 report

**Participants Represented by Reporting Jurisdiction/Agency (i.e., individual city(ies), county(ies), other agency(ies)):**

Clayton	Concord	Contra Costa-Unincorporated	Danville	Lafayette
Martinez	Moraga	Orinda	Pleasant Hill	San Ramon
Walnut Creek				

**Permanent Facilities within Program Service Area:**

Facility Name	EPAID	Site Contact	Phone	Facility Address	County
Central Contra Costa Sanitary District	CAH111000541	David Wyatt	(925) 335-7714	4797 Imhoff Place Martinez, CA 94553	Contra Costa

**Program Types:**

Program Type	EPAID	Program Type	EPAID	Program Type	EPAID	Program Type	EPAID
Permanent Facility	CAH111000541	Retail - Ace Hardware Walnut Creek - Ygnacio		Retail - Ace Hardware Walnut Creek - Mt. Diablo		Retail - Ace Hardware Alamo	
Retail - Ace Hardware Clayton		Retail - Ace Hardware Martinez		Retail - Ace Hardware Blackhawk		Pharmaceutical Collection - Danville PD	
Pharmaceutical Collection - Martinez PD		Pharmaceutical Collection - Walnut Creek PD		Pharmaceutical Collection - CCC Sheriff FOB		Pharmaceutical Collection - CCC Regional Medical Center	
Pharmaceutical Collection - Alamo Substation		Pharmaceutical Collection - Lafayette PD					



DEPARTMENT OF RESOURCES RECYCLING AND RECOVERY

1001 I STREET, SACRAMENTO, CALIFORNIA 95814 • www.CalRecycle.ca.gov • (916) 322-4027  
 P.O. BOX 4025, SACRAMENTO, CALIFORNIA 95812

Collection (pounds)	Material Type	Permanent Facility	Temporary (periodic) Facility	Mobile Facility	Recycle-only Facility	Door to Door (residential) Program	Curbside Program	Load Check	Other
<b>Flammable and Poison</b>	Flammable solids / liquids	90,137							
	Bulked flammable liquids	40,450							
	Oil-based paints	103,369							
	Paint Related Material (PRM)	129,900							
	Poisons	111,040							
	Reactive and explosive	29							
	Compressed gas cylinders	20,440							
	1 lb propane canister	3,680							
	<b>Flammable and Poison subtotal</b>	<b>499,045</b>							
<b>PCB-containing</b>	PCB-containing paint								
	Other PCB waste (includes ballasts)	2,100							
	<b>PCB-containing subtotal</b>	<b>2,100</b>							
<b>Reclaimable</b>	Antifreeze	34,216							
	Auto type batteries (motor vehicles)	54,677							
	Latex paint	743,381							
	Motor oil/oil products	172,960							
	Used oil filters (recyclables only)	4,314							
	<b>Reclaimable subtotal</b>	<b>1,009,548</b>							
<b>Acid</b>	Inorganic and organic acid	20,588							
<b>Base</b>	Inorganic and organic base	34,500							
<b>Oxidizer</b>	Neutral oxidizers, Organic peroxides, Oxidizing acid/base	8,991							
<b>Asbestos</b>	Asbestos	2,360							
<b>Universal Waste (UW)*</b>	Mercury containing automatic switches / thermometers / and novelties	171							
	Mercury containing thermostats	15							
	Mercury containing waste (other)	141							
	Lamps	33,467							
	Photovoltaic Modules								
	Other batteries	34,377							17,301
	Aerosol cans	40,024							
	Rechargeable batteries	8,042							



# DEPARTMENT OF RESOURCES RECYCLING AND RECOVERY

1001 I STREET, SACRAMENTO, CALIFORNIA 95814 • www.CalRecycle.ca.gov • (916) 322-4027  
 P.O. BOX 4025, SACRAMENTO, CALIFORNIA 95812

Collection (pounds)	Material Type	Permanent Facility	Temporary (periodic) Facility	Mobile Facility	Recycle-only Facility	Door to Door (residential) Program	Curbside Program	Load Check	Other
Electronic Devices (UW)	Covered Electronic Devices								
	Other Electronic Devices								
	<b>Electronic Devices (UW) subtotal</b>								
<b>Universal Waste (UW)* + Electronic Devices (UW) subtotal</b>		<b>116,237</b>							<b>17,301</b>
Other	Home-generated sharps waste	30							
	Home-generated pharmaceutical waste								1,929
	Treated wood								
	Cooking Oil	24,858							
	LED Lamps	2,450							
	Non-PCB Ballasts	4,096							
	Other								
	Printer Cartridges	1,339							
	Scrap Lead	95							
	Smoke Detectors	73							
Reuse Total	147,140								
<b>Other subtotal</b>		<b>180,081</b>							<b>1,929</b>
<b>Grand Total</b>		<b>1,873,450</b>							<b>19,230</b>



DEPARTMENT OF RESOURCES RECYCLING AND RECOVERY

1001 I STREET, SACRAMENTO, CALIFORNIA 95814 • www.CalRecycle.ca.gov • (916) 322-4027  
 P.O. BOX 4025, SACRAMENTO, CALIFORNIA 95812

Disposition (pounds)	Material Type	Destructive Incineration	Fuel Incineration	Landfill	Neutralization / Treatment	Recycled	Reused	Stabilization	Steward
<b>Flammable and Poison</b>	Flammable solids / liquids	5,160	84,977						
	Bulked flammable liquids		40,450						
	Oil-based paints						21,905		81,464
	Paint Related Material (PRM)		129,900						
	Poisons	111,040							
	Reactive and explosive	29							
	Compressed gas cylinders					20,440			
	1 lb propane canister					3,680			
<b>Flammable and Poison subtotal</b>		<b>116,229</b>	<b>255,327</b>			<b>24,120</b>	<b>21,905</b>		<b>81,464</b>
<b>PCB-containing</b>	PCB-containing paint								
	Other PCB waste (includes ballasts)			2,100					
	<b>PCB-containing subtotal</b>				<b>2,100</b>				
<b>Reclaimable</b>	Antifreeze					34,216			
	Auto type batteries (motor vehicles)					54,677			
	Latex paint						93,599		649,782
	Motor oil/oil products					172,960			
	Used oil filters (recyclables only)					4,314			
	<b>Reclaimable subtotal</b>						<b>266,167</b>	<b>93,599</b>	
<b>Acid</b>	Inorganic and organic acid				20,588				
<b>Base</b>	Inorganic and organic base				34,500				
<b>Oxidizer</b>	Neutral oxidizers, Organic peroxides, Oxidizing acid/base				8,991				
<b>Asbestos</b>	Asbestos			2,360					
<b>Universal Waste (UW)*</b>	Mercury containing automatic switches / thermometers / and novelties					171			
	Mercury containing thermostats								15
	Mercury containing waste (other)					141			
	Lamps					33,467			
	Photovoltaic Modules								
	Other batteries					51,678			
	Aerosol cans	26,016	14,008						
	Rechargeable batteries					8,042			



DEPARTMENT OF RESOURCES RECYCLING AND RECOVERY

1001 I STREET, SACRAMENTO, CALIFORNIA 95814 • www.CalRecycle.ca.gov • (916) 322-4027  
 P.O. BOX 4025, SACRAMENTO, CALIFORNIA 95812

Disposition (pounds)	Material Type	Destructive Incineration	Fuel Incineration	Landfill	Neutralization / Treatment	Recycled	Reused	Stabilization	Steward
Electronic Devices (UW)	Covered Electronic Devices								
	Other Electronic Devices								
	<b>Electronic Devices (UW) subtotal</b>								
<b>Universal Waste (UW)* + Electronic Devices (UW) subtotal</b>		<b>26,016</b>	<b>14,008</b>			<b>93,499</b>			<b>15</b>
Other	Home-generated sharps waste			30					
	Home-generated pharmaceutical waste	1,929							
	Treated wood								
	Cooking Oil					24,858			
	LED Lamps					2,450			
	Non-PCB Ballasts					4,096			
	Other								
	Printer Cartridges					1,339			
	Scrap Lead					95			
	Smoke Detectors					73			
Reuse Total							147,140		
<b>Other subtotal</b>		<b>1,929</b>		<b>30</b>		<b>32,911</b>		<b>147,140</b>	
<b>Grand Total</b>		<b>144,174</b>	<b>269,335</b>	<b>4,490</b>	<b>64,079</b>	<b>416,697</b>	<b>262,644</b>		<b>731,261</b>

# APPENDIX II

## CESQG CHARGES



**SCHEDULE OF HAZARDOUS WASTE HANDLING  
AND DISPOSAL CHARGES FOR CONDITIONALLY  
EXEMPT SMALL QUANTITY GENERATORS**

(Revision date 11/5/99)

Waste Category (Packaging Method)	Example Waste Materials		Per Pint Container <sup>1</sup>	Per Quart Container <sup>1</sup>	Per 1 Gallon Container <sup>1</sup>	Per 5 Gallon Container <sup>1</sup>	Other Unit Charges
<b>Antifreeze</b> (Bulked)	Uncontaminated for Recycle						\$1.40/gal
<b>Latex Paint</b> (Bulked)	Latex-based Paints, Stains						\$2.50/gal
<b>Motor Oil</b> (Bulked)	Uncontaminated for Recycle						\$0.28/gal.
<b>Aerosols</b> Hazard Class 2 (Loosepack)	Spray Paints Insecticides Aerosol Cleaners		\$1.65	\$3.30			
<b>Flammable/ Combustible Materials: Fuels Blending</b> Hazard Class 3.0 (Loosepack) (Bulked option for some wastes) <sup>2</sup>	<u>Paint-Related Material:</u> Oil- Based Paint/Stains Varnishes	Solvents Thinners	\$0.50	\$1.00	\$3.40	\$20.50	\$2.50/gal. <sup>2</sup>
	Adhesives Alcohol Brush Wash Diesel Epoxy Resins Gasoline/Fuels Grease	Glues Ink/Toners Polishes White Gas Methanol Roof Tar Sealers	\$0.50	\$1.00	\$3.75	\$30.00	\$2.50/gal. <sup>2</sup>



Waste Category (Packaging Method)	Example Waste Materials		Per Pint Container <sup>1</sup>	Per Quart Container <sup>1</sup>	Per 1 Gallon Container <sup>1</sup>	Per 5 Gallon Container <sup>1</sup>	Other Unit Charges
<b>Corrosives, Oxidizers, Acids, Bases: Neutralization/ Treatment</b> Hazard Class B (Labpack)	Acetic Acid Ammonia Citric Acid Corrosives Potassium Hydroxide Sodium Hydroxide	Ferric Chloride Formic Acid Hydrochloric Acid Hydrofluoric Acid Hypochlorite Caustics	\$1.20	\$2.40	\$9.50	\$47.50	
<b>Poisons, Toxic Materials: Incineration</b> Hazard Class 6, 3(6) (Labpack)	Insecticides Pesticides Flammable Pesticides	Herbicides Toxic Lab Chemicals	\$1.70	\$3.40	\$13.50	\$67.50	
<b>Contaminated Solids, Other Hazardous Materials: Landfill</b> Hazard Class 9, Non-RCRA (Labpack or Loosepack)	Non-RCRA Hazardous Wastes Fertilizers Absorbents		\$0.65	\$1.30	\$5.25	\$26.50	
<b>Reactives</b> Hazard Class 4 (Labpack)	Cyanides Dangerous When Wet	Sulfides Bromine Spontaneously Combustible	\$2.50	\$5.00	\$20.00	\$99.00	
<b>Asbestos</b> (Loosepack)	Double-Bagged Friable Asbestos Wastes						\$120 per cubic yard

<b>Waste Category (Packaging Method)</b>	<b>Example Waste Materials</b>		<b>Per Pint Container<sup>1</sup></b>	<b>Per Quart Container<sup>1</sup></b>	<b>Per 1 Gallon Container<sup>1</sup></b>	<b>Per 5 Gallon Container<sup>1</sup></b>	<b>Other Unit Charges</b>
<b>Household Batteries</b> Hazard Class 8, 9 (Loosepack)	Alkaline Lithium	Nickel Cadmium Silver Oxide					\$0.10 each
<b>Oil Filters</b> (Loosepack)	Automotive and Truck/Tractor Filters						\$1.00 each
<b>Vehicle Batteries</b> (Not packaged)	Unbroken/Non-Leaking Lead-Acid Batteries						No Charge
<b>Fluorescent Tubes</b> (Loosepack)							\$0.15/ft.
<b>Propane Cylinders</b> (Loosepack)	5-Gallon "BBQ" Style					\$5.00	
<b>Propane Cylinders</b> (Loosepack)	Smaller than 5-gallon Cylinders		\$1.40	\$2.75	\$11.00		

<sup>1</sup> Prices are based on container size regardless of how full; containers of other than the specified sizes will be charged at an interpolated or prorated price.

<sup>2</sup> This rate will be available when the bulking of flammable liquids can be performed at the facility. Flammable liquids that cannot be bulked will be charged the rate based on the container size.

Note: Each Conditionally Exempt Small Quantity Generator (CESQG) shall be charged an Administration Fee of \$20.00 for each drop-off in addition to the above handling and disposal charges.

(Ord. 229 Exh. A (part), 2004; Ord. 212 § 1 Exh. A, 1999; Ord. 206 Exh. A, 1999)

# APPENDIX III

## HHW PROGRAM HISTORY



1997 TO PRESENT

